

Robin by Julie Hyde

1. **Lightly draw** the robin and handle.

2. **Mask out** a little snow on the fork handle with masking fluid. Use a little soap on your brush first to protect your brush. Add a few small dashes to the robin's tummy and to the lower edge of the handle. Flick some masking over the background.

3. **Background** Get a pinch of salt ready. Mix puddles of weak:-

- Alizarin Crimson + Ultramarine Blue (purple)
 - Ultramarine Blue
 - Prussian Blue **or** Intense Blue + Burnt Sienna (dark green)
- With a mop brush and clean water, wet the paper all over apart from the robin and handle. Using a large brush add the colours in patches, letting them merge together. Add twenty grains of salt while its still wet. **LET IT DRY**

4. **Robin.** Rub the masking off the tummy. Using a small brush (No. 6 or 8), adding a few dashes of clean water in the direction of the feathers to one area of the robin and add the colours into that patch. Just wet one area at a time and then repeat on the next patch. For the red breast use:-

- Yellow Ochre
- Cadmium Red
- Alizarin Crimson

For the sides of the body:-

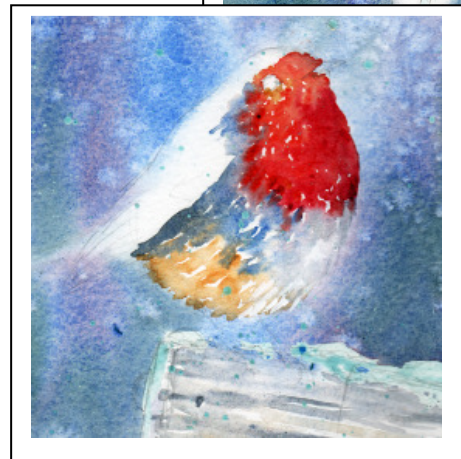
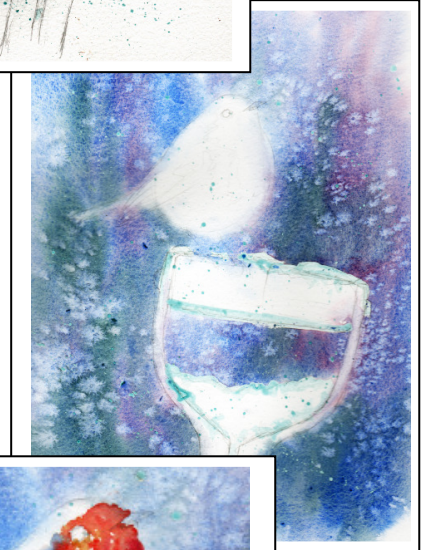
- Ultramarine Blue + A touch of Alizarin Crimson (purple)

And underneath perhaps a little:-

- Yellow Ochre
- Burnt Umber + Ultramarine Blue

For the head; wings and tail, dot the water on around the head and add long, thin streaks of water to the wings and tail the immediately add:-

- Burnt Umber
- Burnt Umber + Ultramarine Blue



The legs are painted on to dry paper with a little weak:-

- Alizarin Crimson

The eyes and beak are strong:-

- Burnt Umber + Ultramarine Blue (but leave a little white highlight in the eye)

5. **Wooden Handle.** Rub the masking off the lower part of the wooden handle but not off the snow on top. Add long thin streaks of water in the direction of the grain and long dashes of:-

- Yellow Ochre
- Burnt Umber + Ultramarine Blue

Wet one side of the rusty metal handle and add strong:-

- Burnt Umber
- Burnt Sienna
- Burnt Umber + Ultramarine Blue

6. **Snow.** Rub off the masking; add spots of clean water and then, to the bottom add a touch of:-

- Ultramarine Blue

